

The Right Stuff

TIME FOR CHANGE
IT IS UP TO YOU
WHICH DIRECTION
YOU CHOOSE !!!

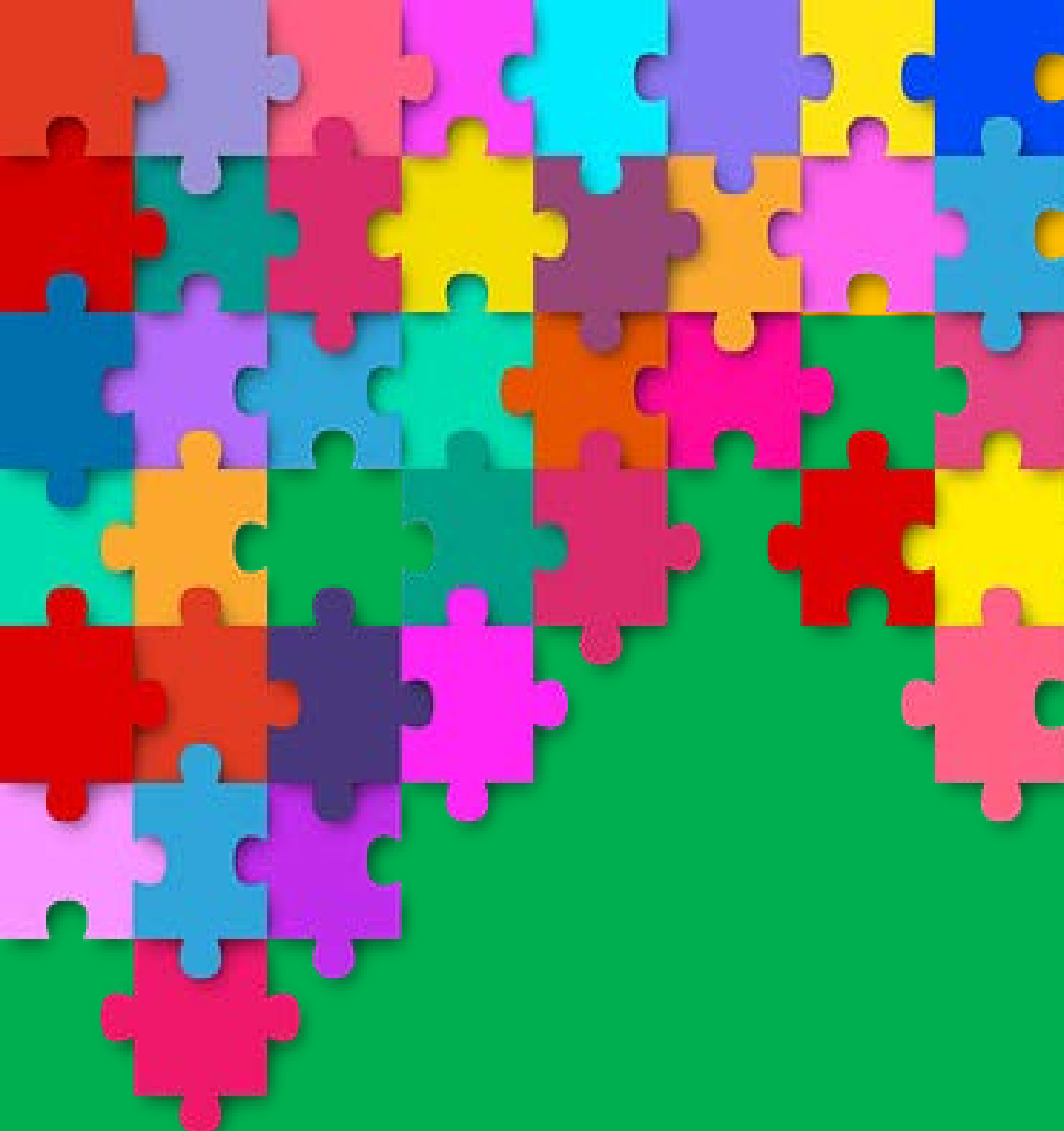
What RBW set out to achieve and why

- Early view that there is mixed governance in sector
- Changing operating context and big aspirations



Set out to:

- Assess progress since 2013 review
- Articulate a vision for good governance
- Identify what might still need to change



How we went about it

Steering Group

Correspondence Group

Tamsin Stirling, consultancy support

Survey: Chairs and Chief Executives

Workshops: Chairs and Chief Executives

Focus Group: Regulation Managers

Workshop: Governance Network

Desktop research

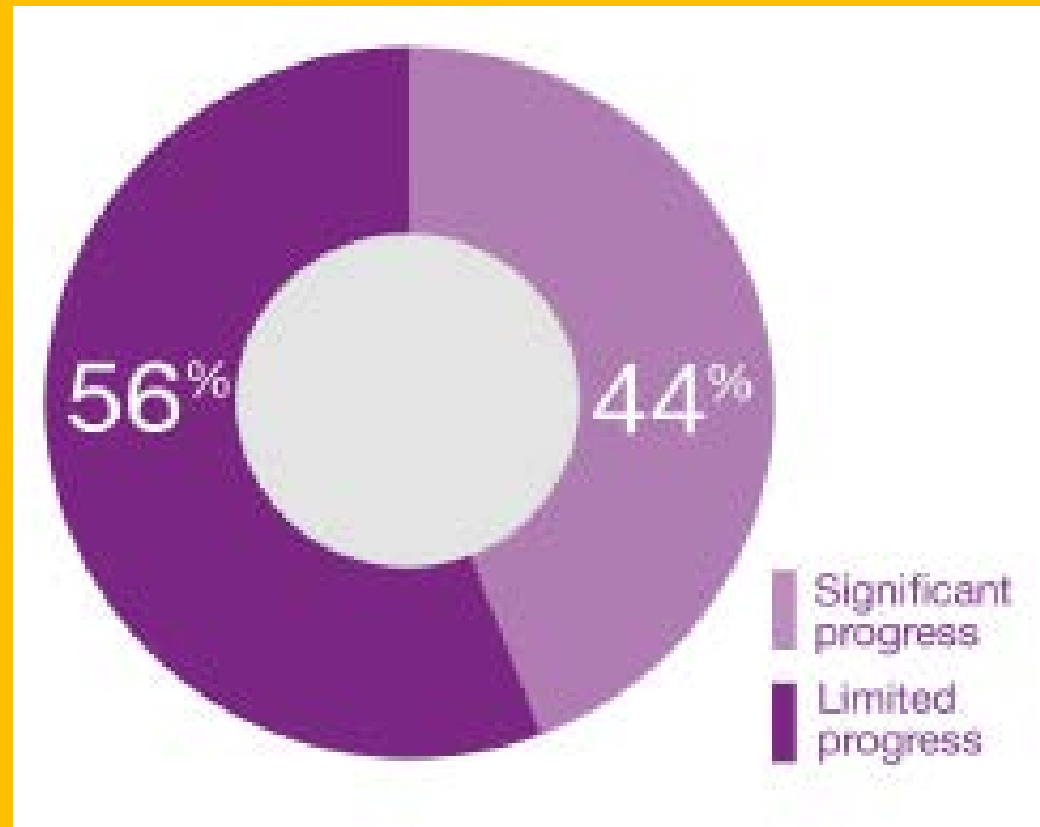
Literature review

Progress following 2013 review

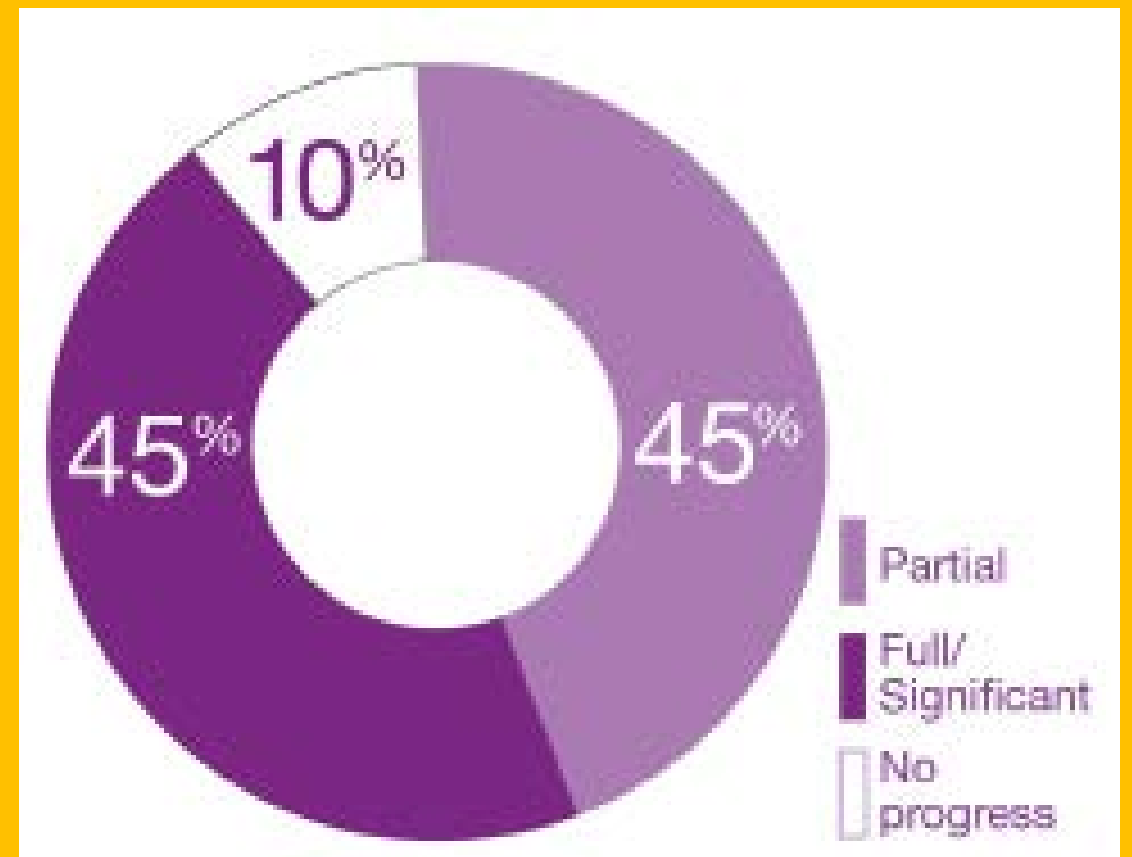


Progress.....

Actions for individual Housing Associations



Actions for the Sector



Key messages

A glass bottle with a metal clasp and a red seal lies on a sandy beach. The bottle is partially filled with sand and is surrounded by various seashells and pieces of driftwood. The background is a soft-focus view of the beach and ocean.

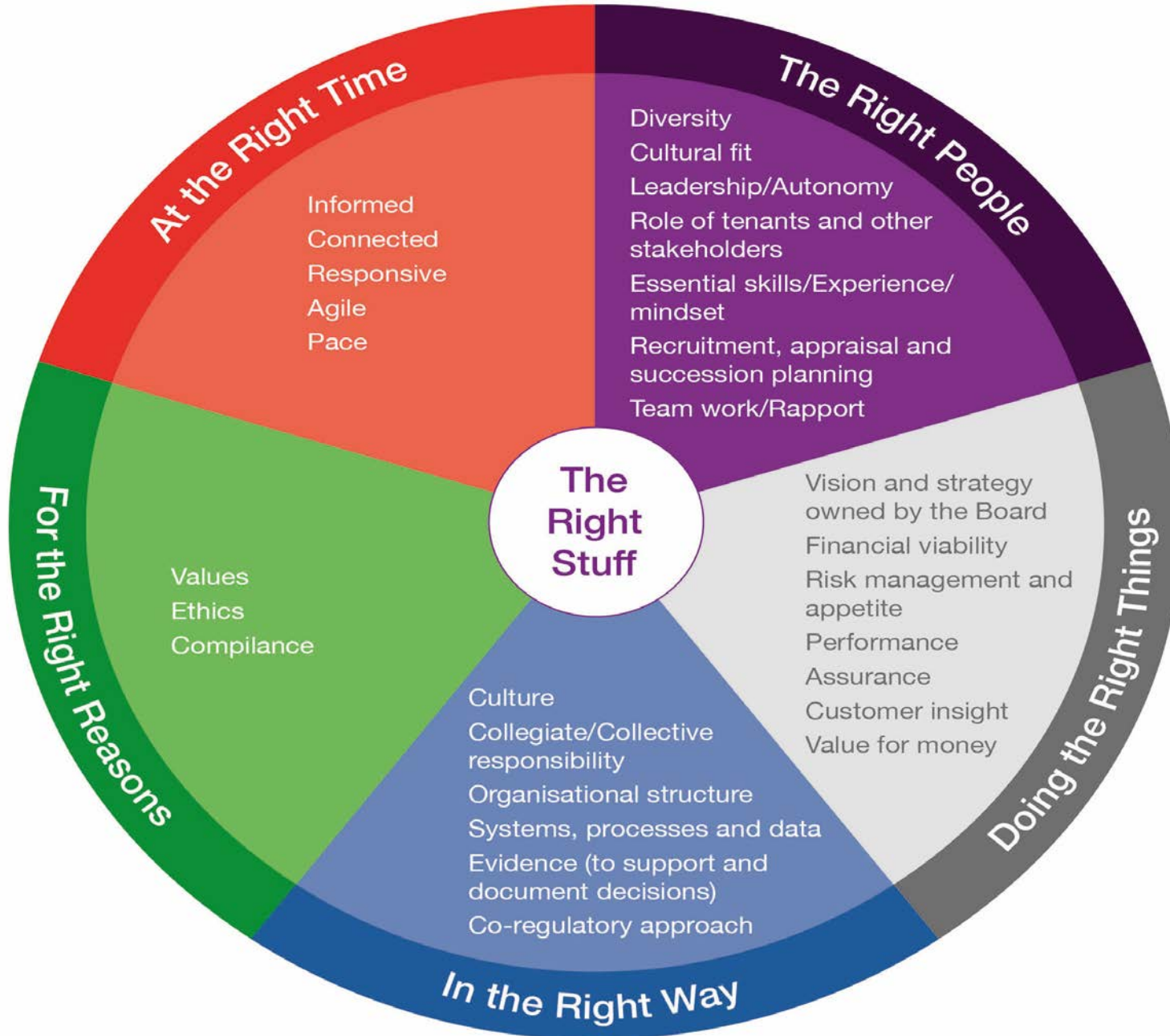
- Don't make the mistake of thinking this doesn't apply to you and your organisation
- Robust Board Assurance is vital
- The stakes on good governance can only get higher

- There is no-one-size-fits-all model of good governance
- The next steps on our governance journey are about behaviours and culture

Key Messages

- This means YOU!
 - No one's perfect
 - Governance is never "done"
 - Anyone could be the next governance problem
- Robust Board Assurance
 - Board members should not be happy to take someone's word for it
- Higher and higher stakes on good governance
 - Poor governance can lead to failure
 - Context getting tougher
- No one size fits all model
 - You need to decide what's right for you just now
- Effective leadership and the right skills and behaviours are vital along with robust tenant and service user perspective

Vision of Good Governance



The Right Stuff

The Right Stuff

Opportunities to strengthen governance



The end goal: *excellent governance supporting a vibrant and healthy housing association sector.*

To achieve this we'll need:

1. Input from everyone, and collaboration
2. An effective Governance Thought Leadership Group

RBW

Regulator

CHC

Sector

Individual
HAs

Opportunities

- **Individual Has**

- Use the Right Stuff framework to look at your governance
- Regular review of governance effectiveness – with an independent element

- **Sector**

- Grasp the need for thought leadership

- **Regulator**

- Increased emphasis on governance sharing lessons learned and providing clarity on regulatory expectation on governance

- **Regulatory Board**

- Move forward understanding of tenant perspective though next year's review

- **Community Housing Cymru**

- Support to recruitment
- Governance support package
- Peer support/ good practice dissemination
- Keep governance on every agenda

Making It Work

- Everyone needs to take action – in particular Housing Associations and the sector more generally
- Continued collaborative approach – we all want the same thing
- Responsibility for monitoring progress – the thought leadership group
- Part of regulatory oversight – through discussion with regulation managers