

**arbed 2**  
**ERDF project**

Savings for  
you and your  
community



Llywodraeth Cymru  
Welsh Government



# Melin Homes & Measuring Community Benefits

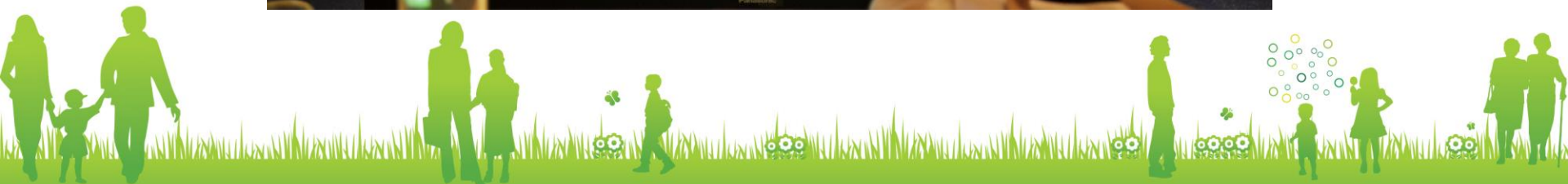


# arbed 2 ERDF project

Savings for  
you and your  
community



## Setting the Scene



**arbed 2**  
**ERDF project**

Savings for  
you and your  
community



# Completing The Measurement Tool

Enterprise  
Employment  
Resources  
Community  
Workforce  
Commentary



# arbed 2 ERDF project

Savings for  
you and your  
community



## Enterprise



## Welsh National Procurement Award Winners 2014



# arbed 2 ERDF project

Savings for  
you and your  
community

## Employment



# arbed 2 ERDF project

Savings for  
you and your  
community

## Resource



# arbed 2 ERDF project

Savings for  
you and your  
community

## Community



# arbed 2 ERDF project

Savings for  
you and your  
community

## Workforce



arbed 2  
ERDF project

Savings for  
you and your  
community

# Commentary

## Any more good news?



CONTRACT MULTIPLIER					
Contract value					£14,362,763
Welsh local multiplier					£2.00
CASHABLE BENEFITS					
Direct investment					£14,362,763
Revenue to businesses based in Wales					£9,088,944
Income to people living in Wales					£5,273,819
Savings to HM Treasury					£256,401
Landfill fees saved					£3,351
Cash donations					£10,700
In-kind donations of labour, goods and services					£7,470
Overall investment in the Welsh and UK economy					£29,003,449
ADDITIONAL BENEFITS					
Contribution to SMEs based in Wales					£1,894,874
Percentage of sub-contractors paid within 30 days					100%
Long-term unemployment reduction					45
Disadvantaged workers employed					39
Apprenticeships					9
Apprenticeship weeks					238
Use of recycled material					95%

**arbed 2**  
**ERDF project**

Savings for  
you and your  
community



# Trisha Hoddinott Melin Homes

**[Trisha.hoddinott@melinhomes.co.uk](mailto:Trisha.hoddinott@melinhomes.co.uk)**

**01495 745910**

